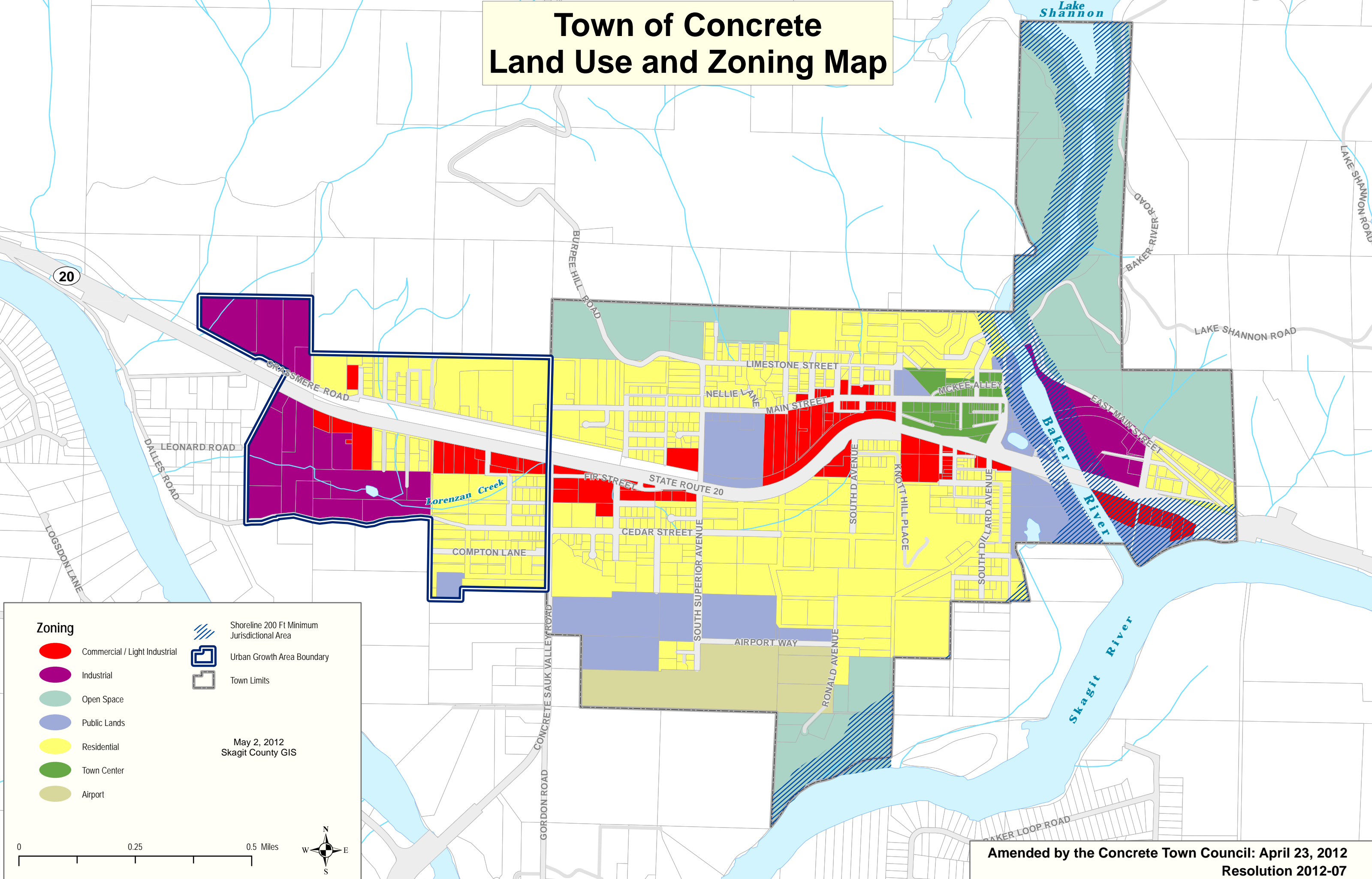


Town of Concrete Land Use and Zoning Map



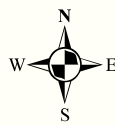
Zoning

- Commercial / Light Industrial
- Industrial
- Open Space
- Public Lands
- Residential
- Town Center
- Airport

- Shoreline 200 Ft Minimum Jurisdictional Area
- Urban Growth Area Boundary
- Town Limits

May 2, 2012
Skagit County GIS

0 0.25 0.5 Miles



Amended by the Concrete Town Council: April 23, 2012
Resolution 2012-07